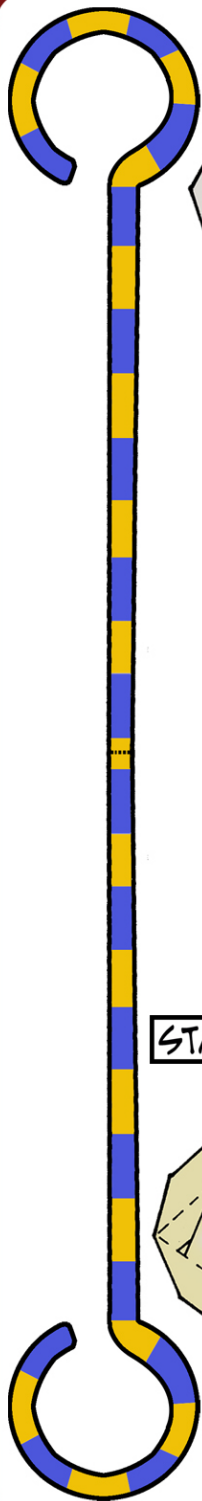


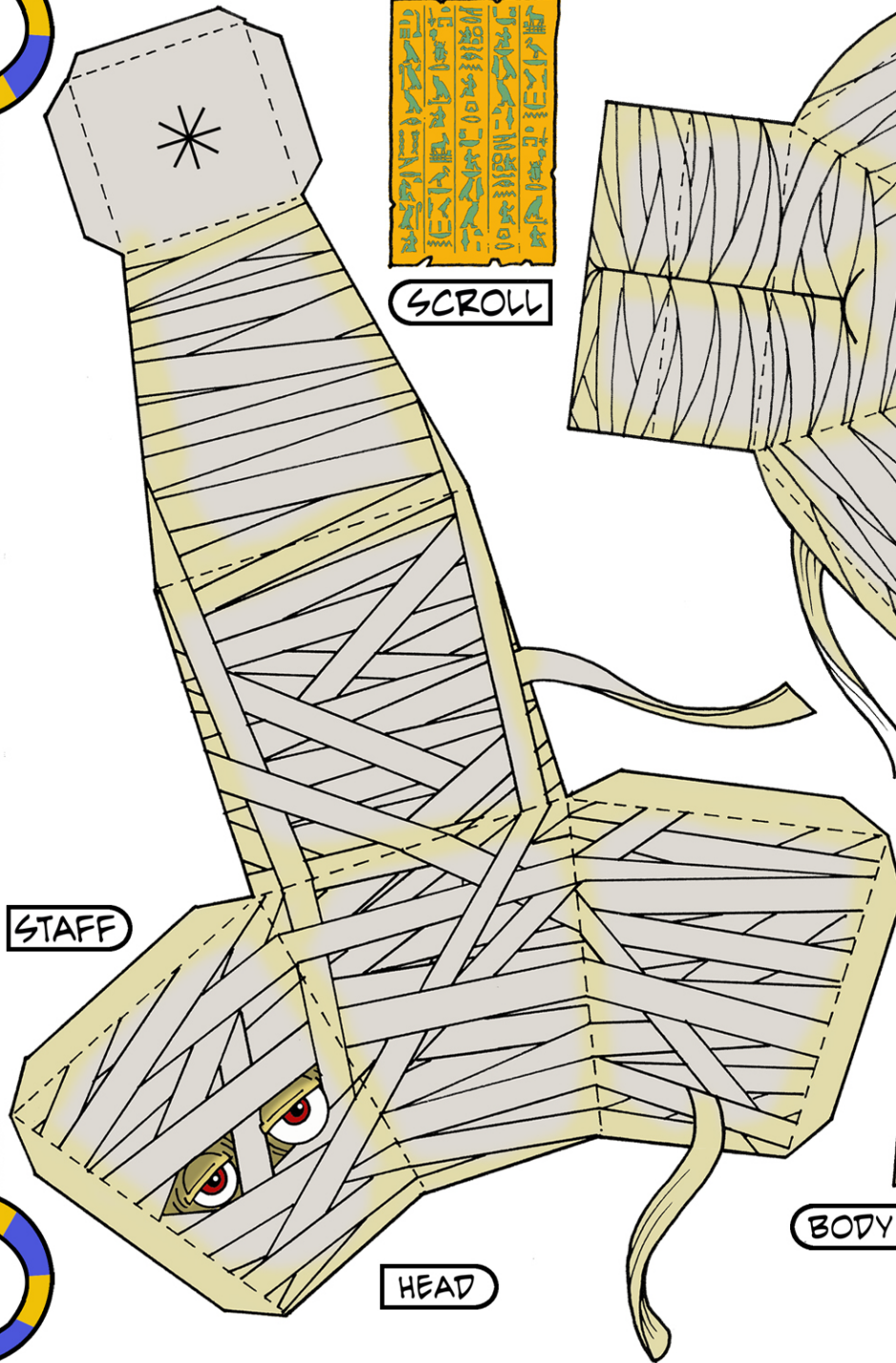
• SCORE ALL THE DOTTED FOLD LINES BEFORE CUTTING ANYTHING OUT •



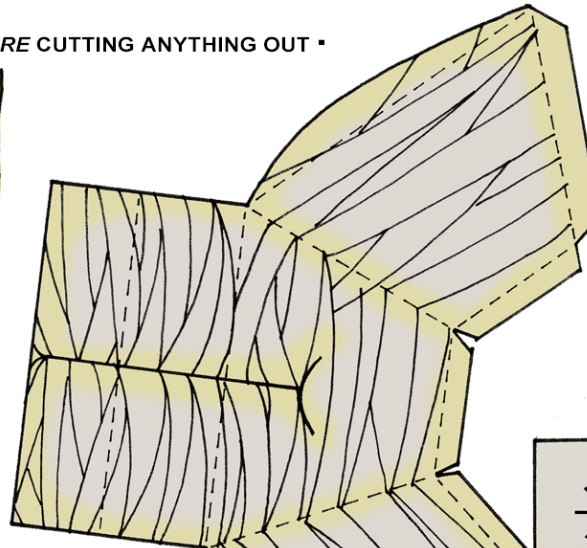
STAFF



SCROLL



HEAD



BODY



# NOGGINZ THE MUMMY

BIGFOOT PAPER TOYS

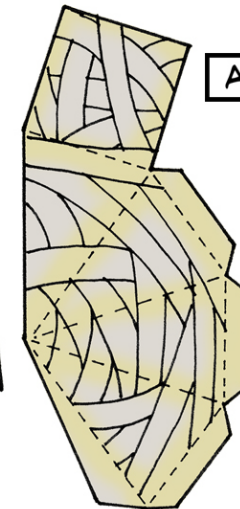


LEFT HAND

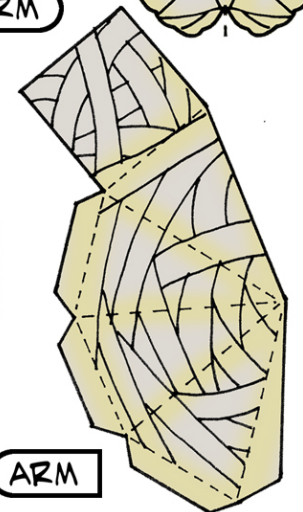
RIGHT HAND



ARM



ARM



ARM

## NOGGINZ THE MUMMY

BIGFOOT PAPER TOYS

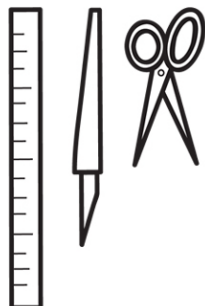
BIGFOOTPAPERTOYS.COM  
ART & DESIGN © TRYSTAN MITCHELL

## INSTRUCTIONS

Please read through before starting your Noggin...

### EQUIPMENT:

You will need... glue, scissors, a ruler (preferably metal) and a craft knife.



**1:** Lightly score all the dotted 'fold' lines with the blade of your scissors, or the back of the craft knife, using the ruler as a guide & being careful not to cut through the card. Keep an eye on your fingers!

Score & fold lines: - - - - -

**2:** With the craft knife cut all the solid black cut lines on the hands, neck of the head & body, & (if any) other areas such as the ears, face etc.

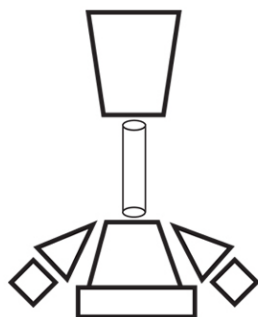
Cut marks:



Cut spoke lines only, leaving triangle tabs attached.



Cut out the entire square or rectangle.



**3:** Now cut out & assemble the individual parts (arms, hands, head, torso etc) & let dry before assembling the complete Noggin. It's really useful to have a slim paint brush or 'pokey stick' handy for firming down the tabs inside as you build.

**4: THE NECK** - Cut the square of paper ( 70 mm x 70 mm ).

Roll round a pencil gluing the free flap and sealing as a tube. Slide the neck tube off the pencil and use to join the two neck areas of your Noggin.

THE NECK

