

ED, WILL & GINGER

THE POSEABLE PAPER TOY SERIES
#2 IN A SERIES OF 3:

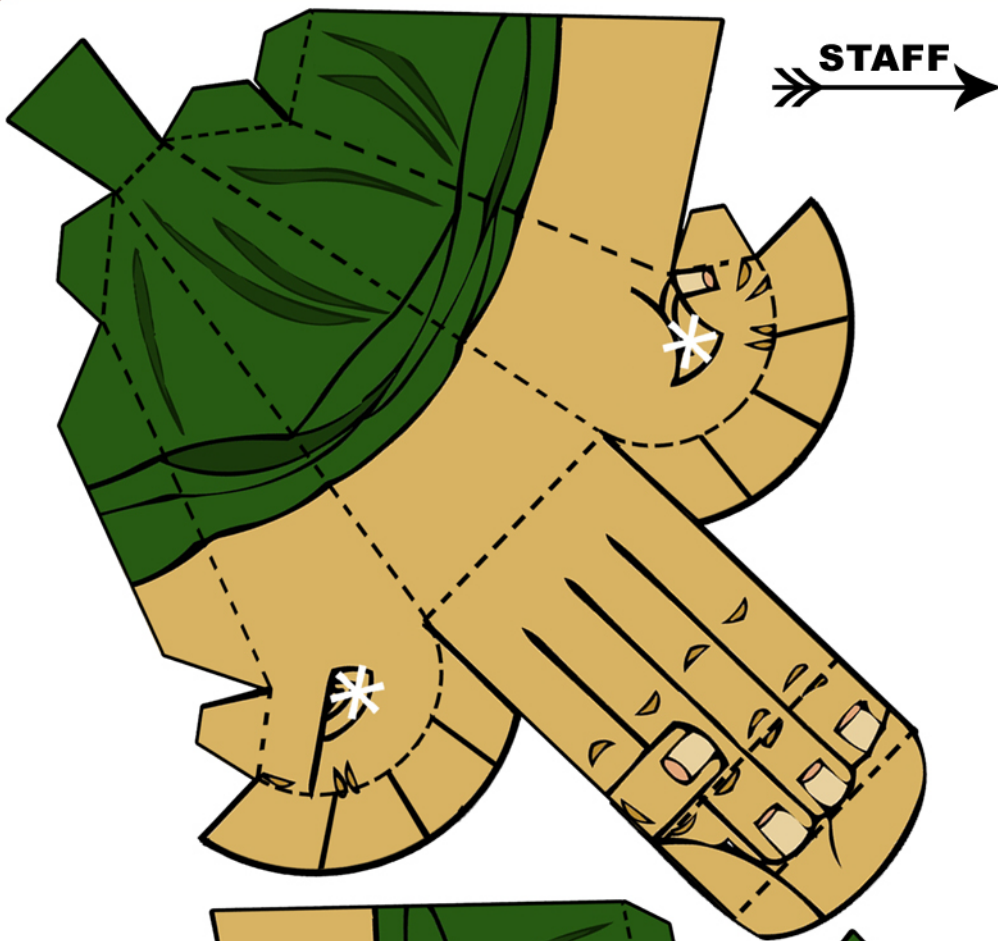
Ed'

- SCORE & FOLD ALL THE DOTTED LINES.
- CUT OUT AROUND THE SOLID OUTLINES.
- SLICE THE LEG & HAND HOLES (*) WITH A SCALPEL OR SHARP KNIFE AND EASE OPEN WITH A PENCIL TIP, CAREFUL NOT TO PUSH IT ALL THE WAY THROUGH.

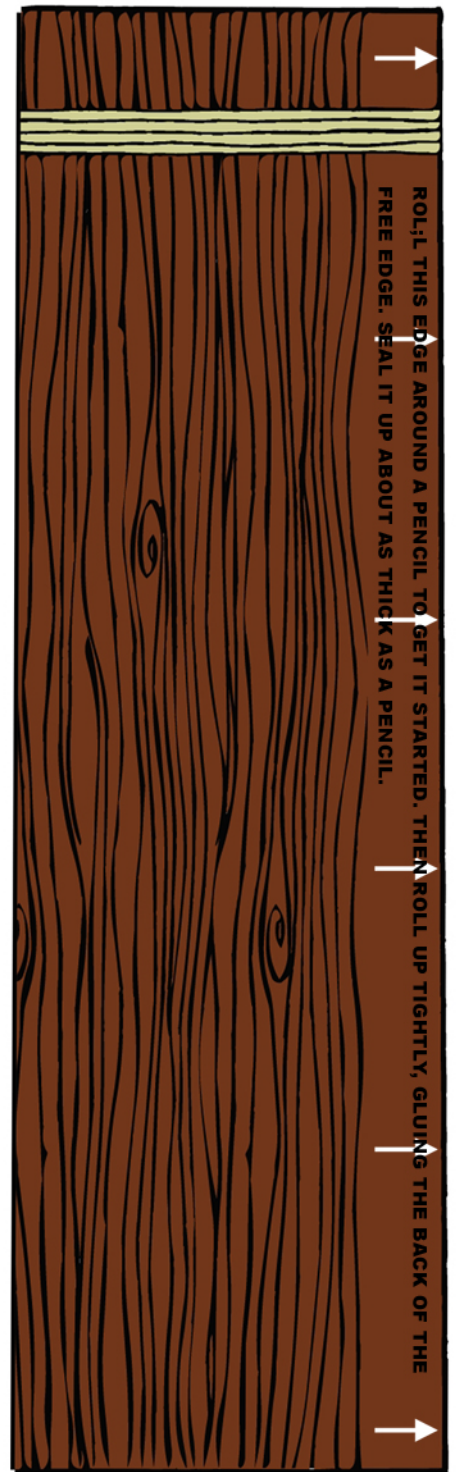


ALL ARTWORK AND DESIGNS © TRYSTAN MITCHELL
WWW.BIGFOOTSTUDIO.CO.UK

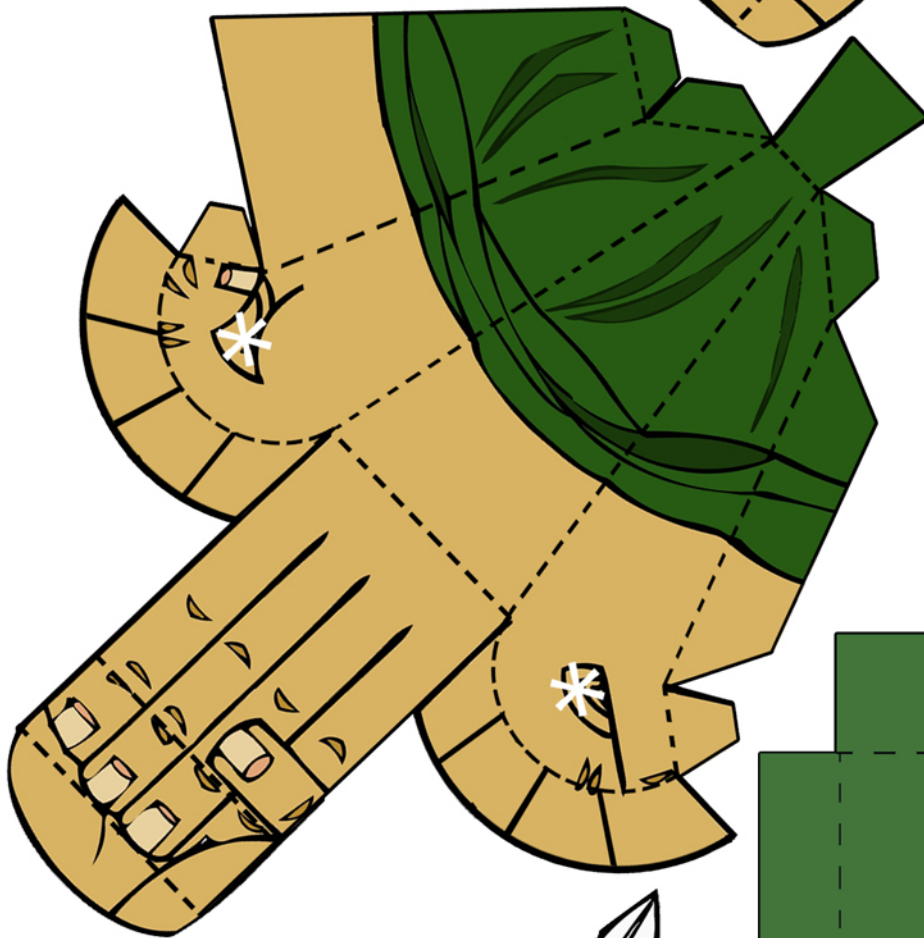




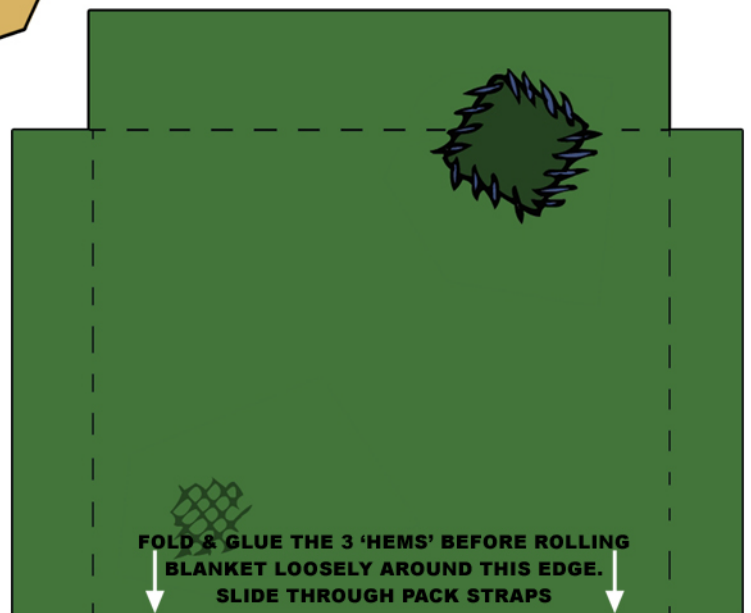
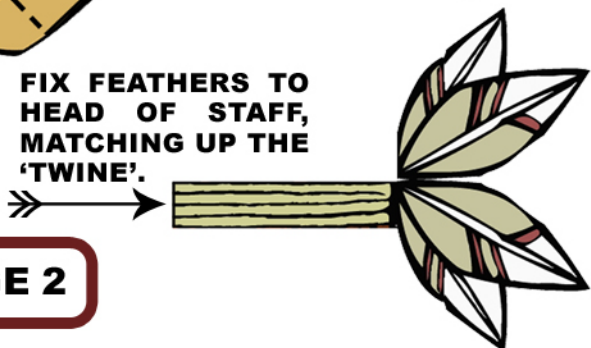
STAFF →



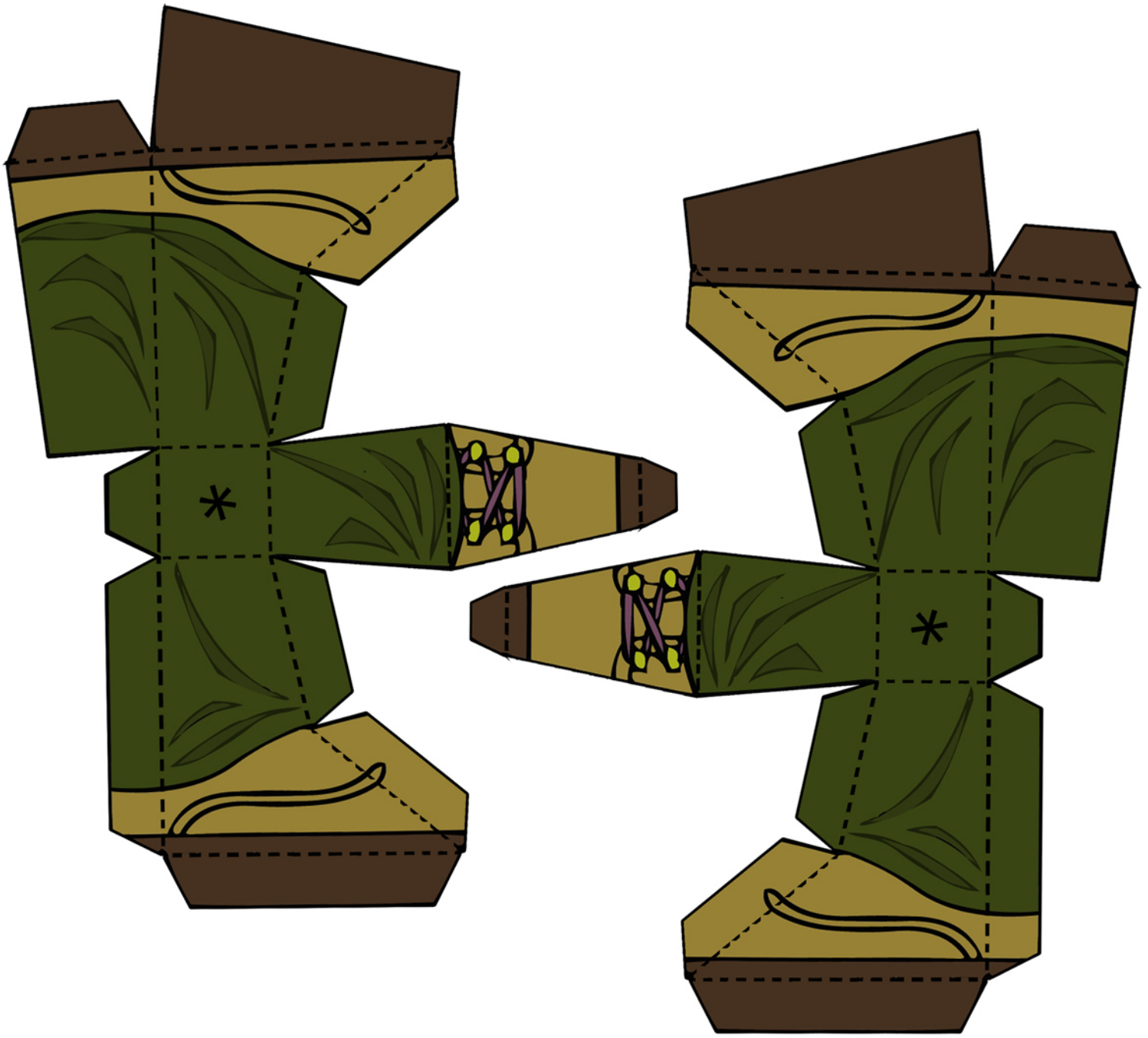
ROLL THIS EDGE AROUND A PENCIL TO GET IT STARTED. THEN ROLL UP TIGHTLY, GLUING THE BACK OF THE FREE EDGE. SEAL IT UP ABOUT AS THICK AS A PENCIL.



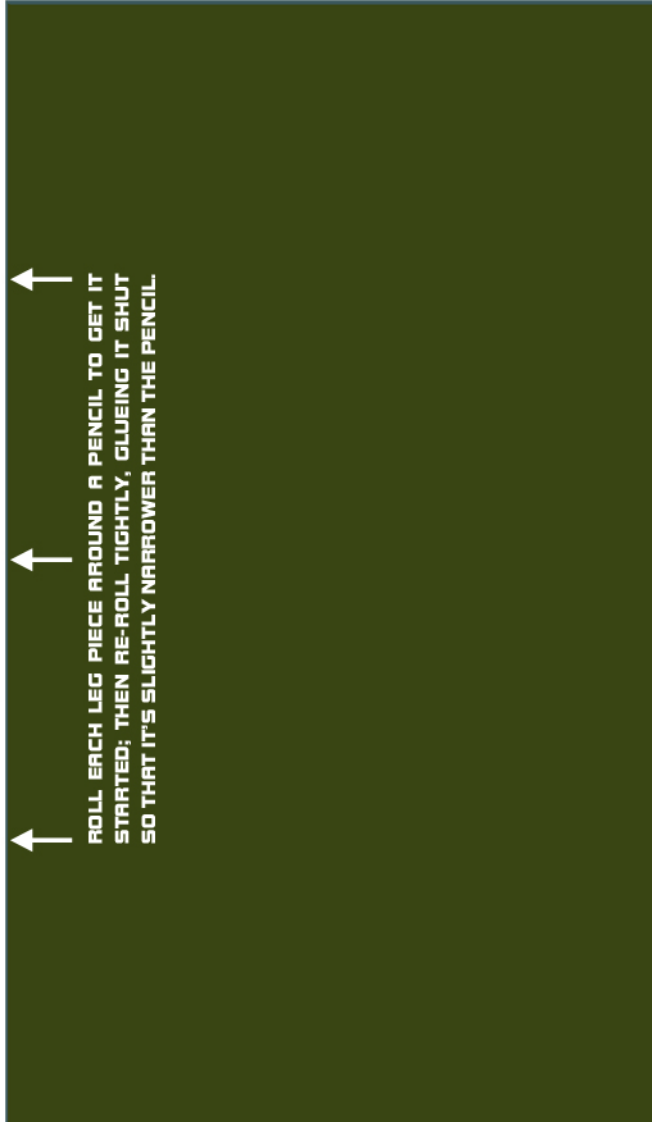
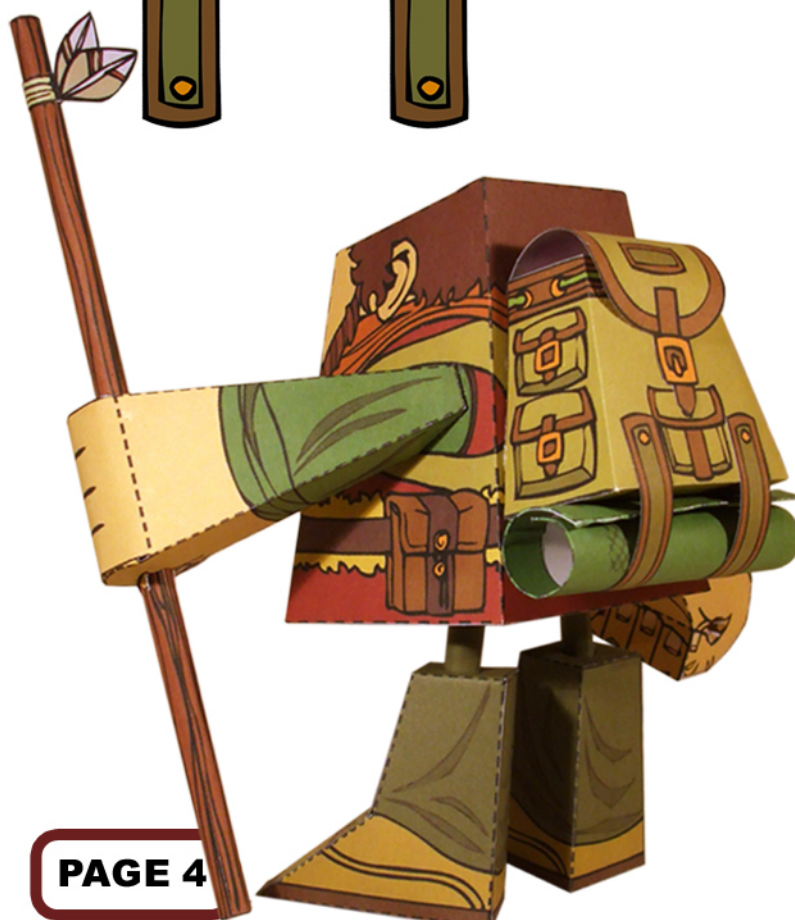
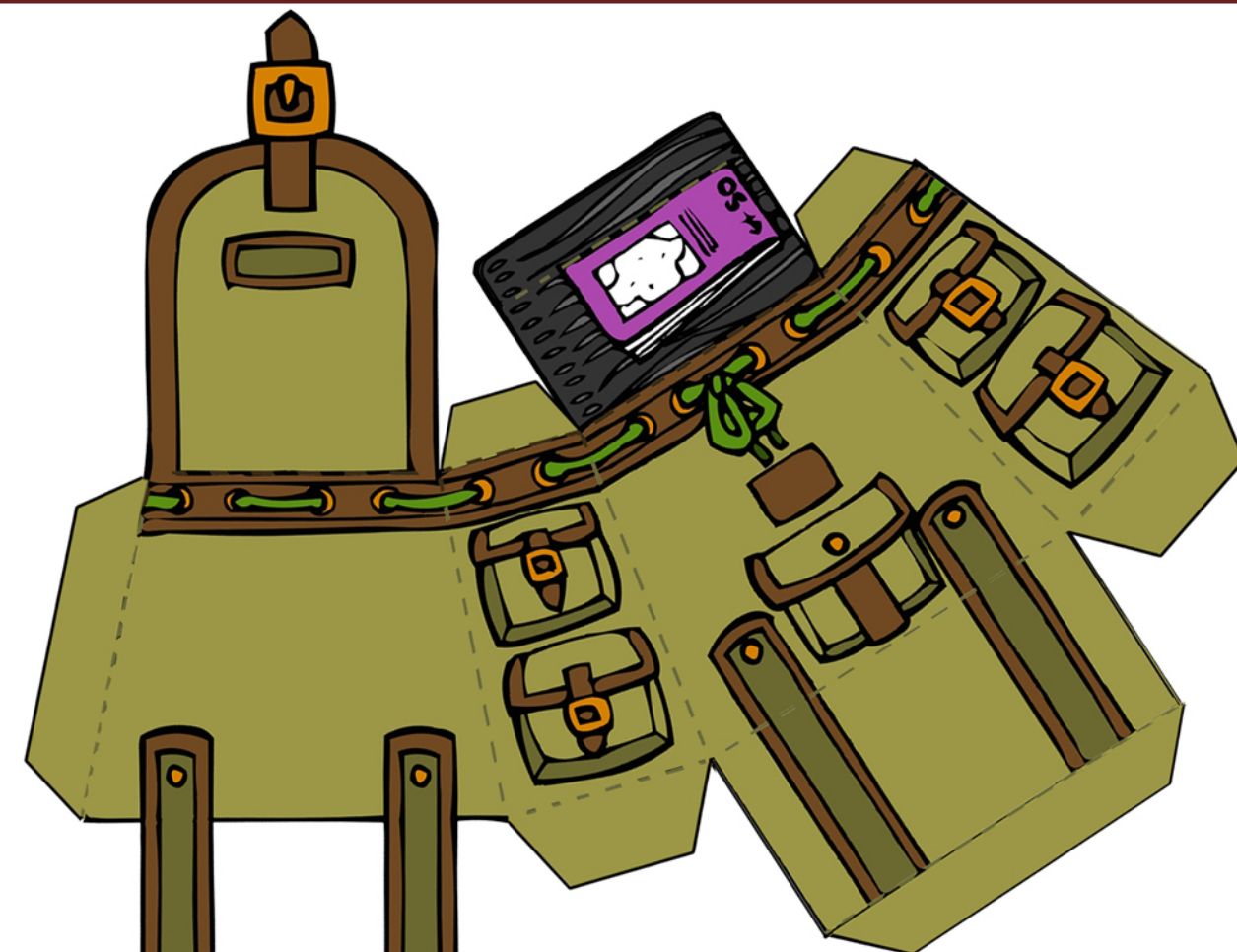
FIX FEATHERS TO HEAD OF STAFF, MATCHING UP THE 'TWINE'.



FOLD & GLUE THE 3 'HEMS' BEFORE ROLLING BLANKET LOOSELY AROUND THIS EDGE. SLIDE THROUGH PACK STRAPS



↑ ↑ ↑
ROLL EACH LEG PIECE AROUND A PENCIL TO GET IT
STARTED; THEN RE-ROLL TIGHTLY, GLUEING IT SHUT
SO THAT IT'S SLIGHTLY NARROWER THAN THE PENCIL.



ROLL EACH LEG PIECE AROUND A PENCIL TO GET IT STARTED; THEN RE-ROLL TIGHTLY, GLUING IT SHUT SO THAT IT'S SLIGHTLY NARROWER THAN THE PENCIL.