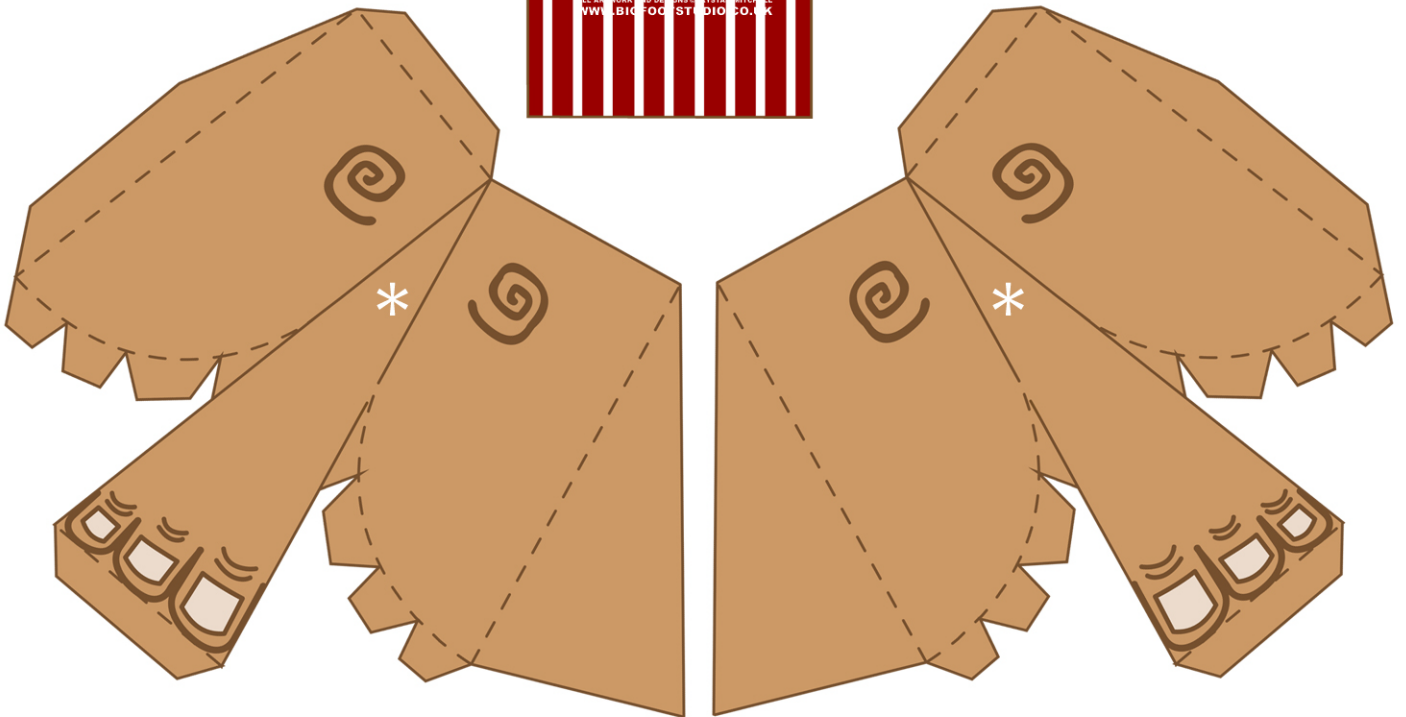
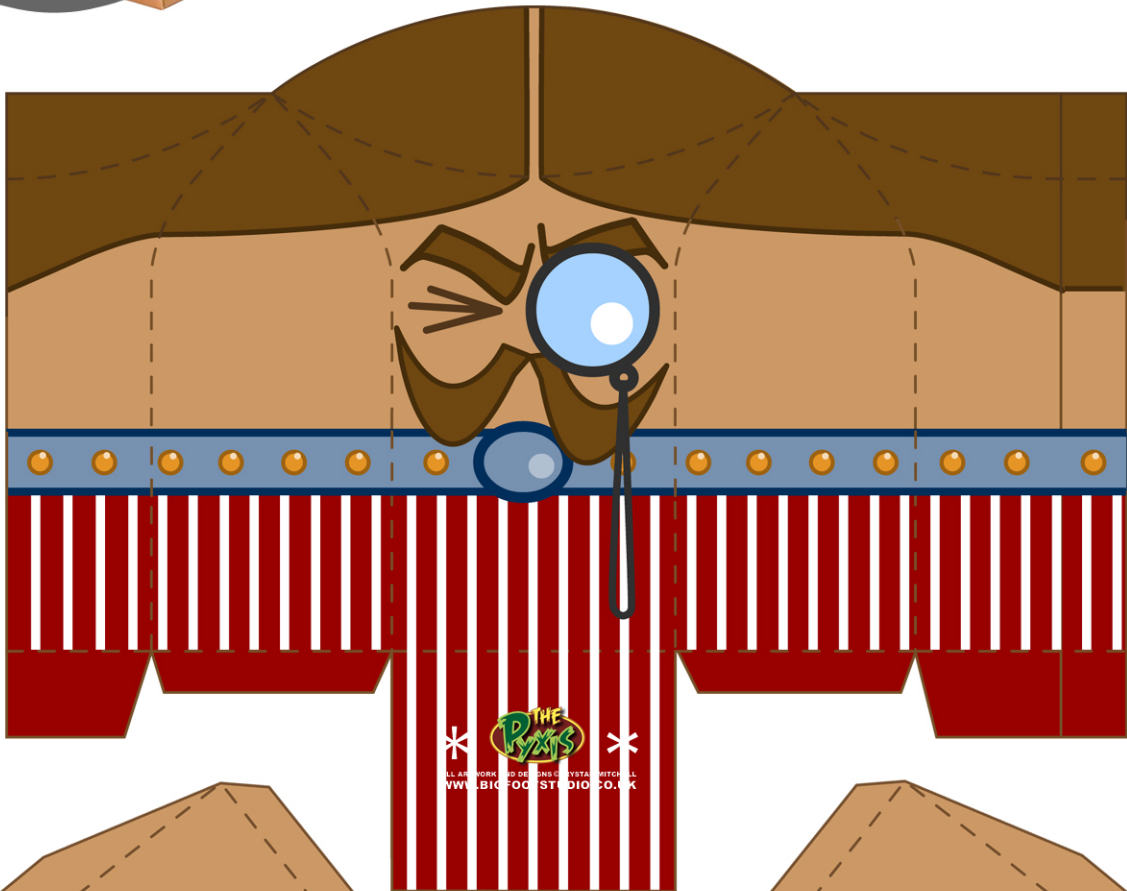
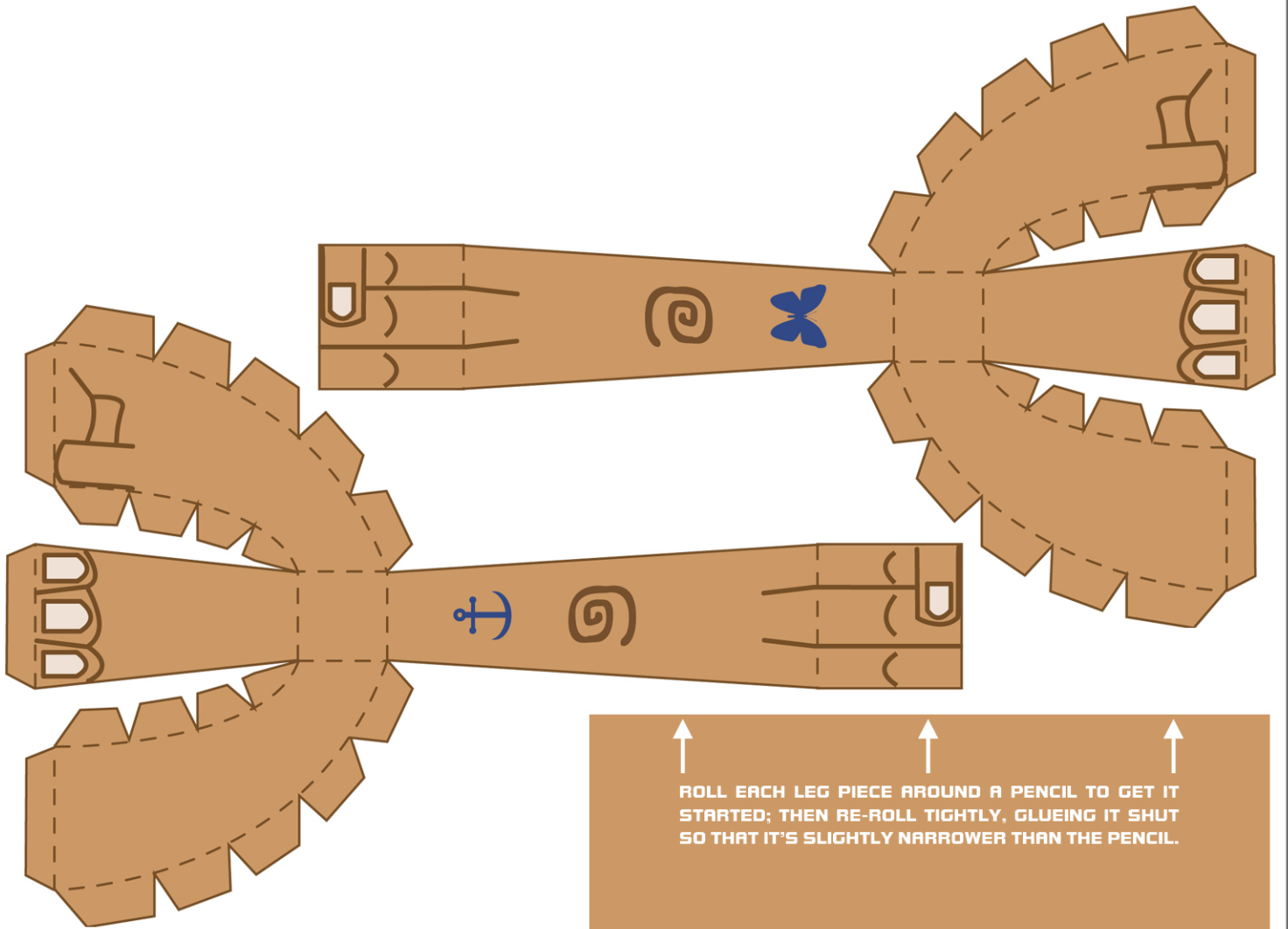


MAJOR PYXIS



- SCORE & FOLD ALL THE DOTTED LINES.
- CUT OUT AROUND THE SOLID OUTLINES.
- SLIT THE LEG HOLES (*) WITH A SHARP BLADE AND ERASE OPEN WITH A PENCIL TIP, CAREFUL NOT TO PUSH IT ALL THE WAY THROUGH.





↑ ↑ ↑
ROLL EACH LEG PIECE AROUND A PENCIL TO GET IT STARTED; THEN RE-ROLL TIGHTLY, GLUEING IT SHUT SO THAT IT'S SLIGHTLY NARROWER THAN THE PENCIL.

↑ ↑ ↑
ROLL EACH LEG PIECE AROUND A PENCIL TO GET IT STARTED; THEN RE-ROLL TIGHTLY, GLUEING IT SHUT SO THAT IT'S SLIGHTLY NARROWER THAN THE PENCIL.

