



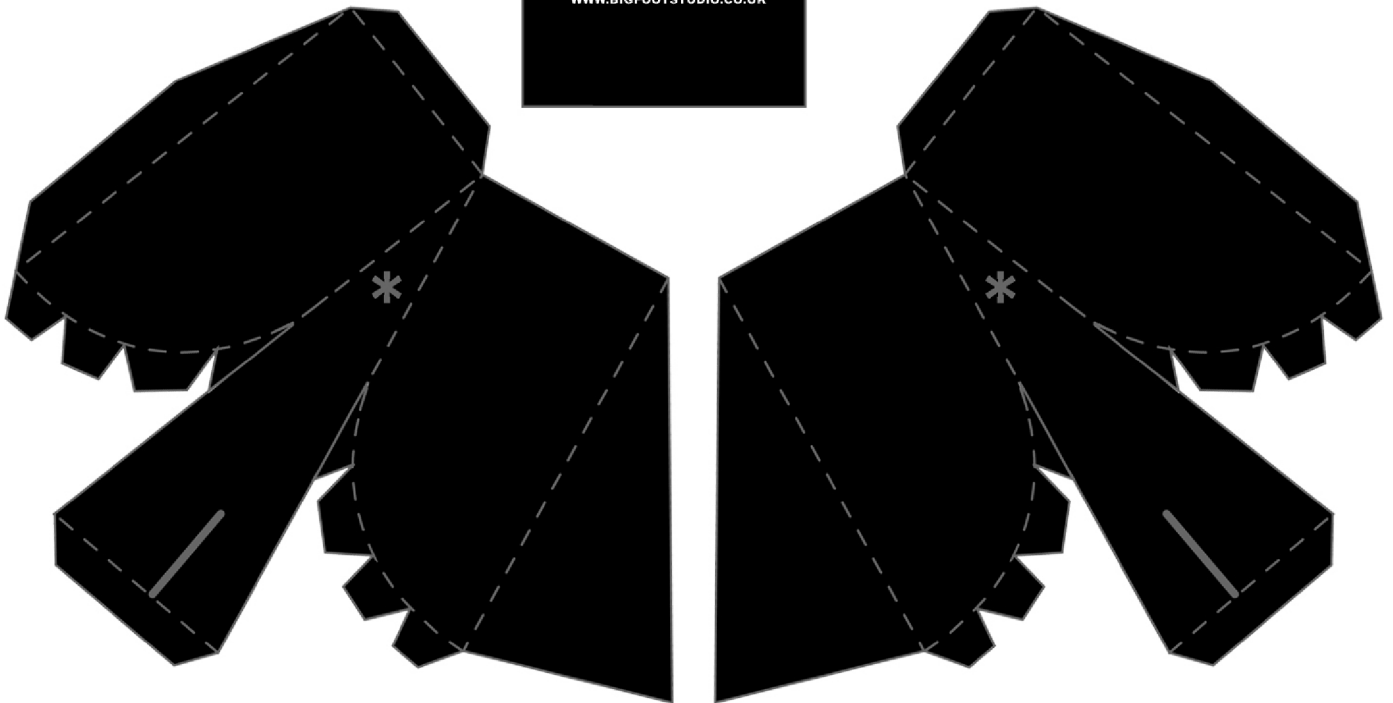
THE PYXIS

NINJA



* THE PYXIS *

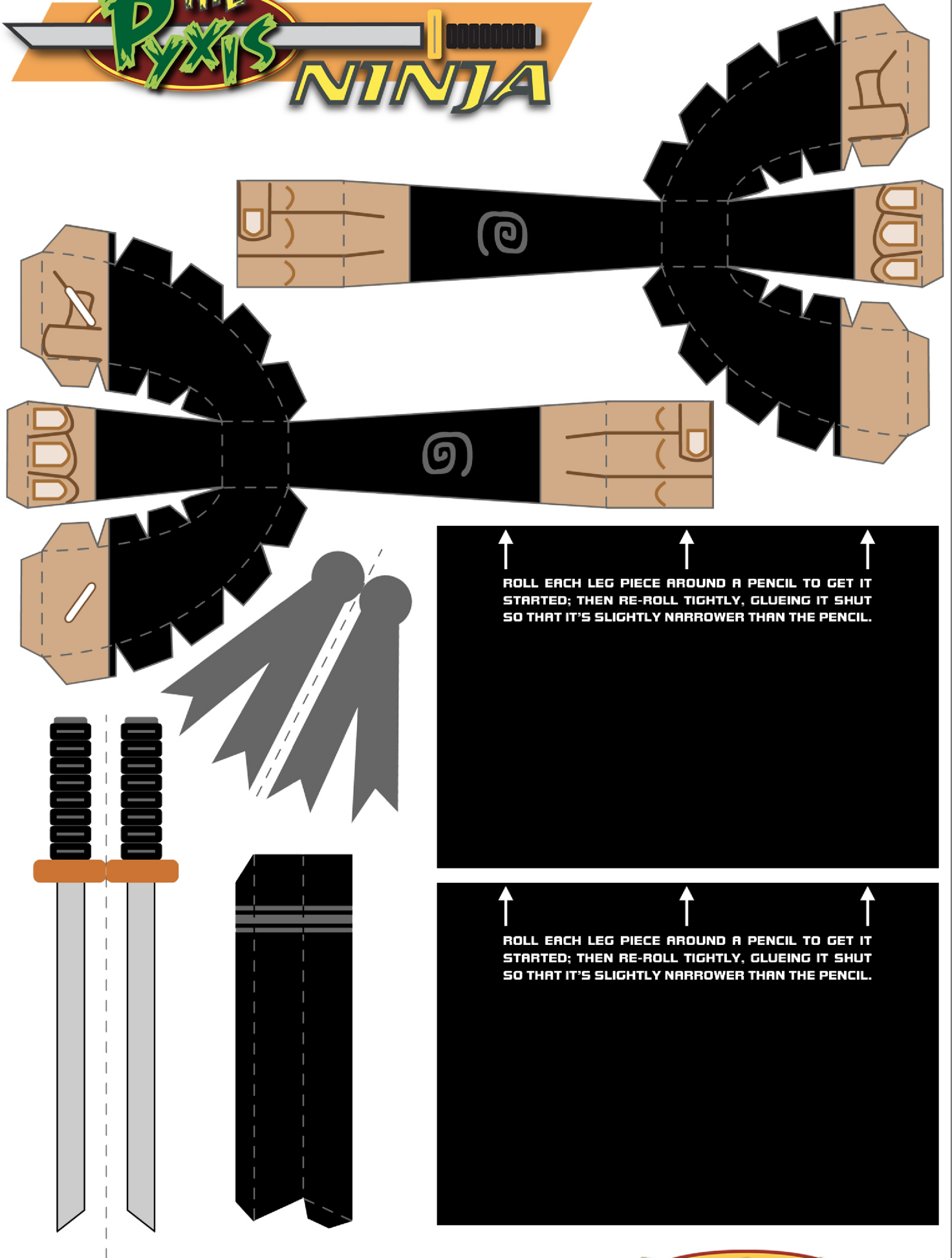
ALL artwork and designs © TRYSTAN MITCHELL
WWW.BIGFOOTSTUDIO.CO.UK



- SCORE & FOLD ALL THE DOTTED LINES.
- CUT OUT AROUND THE SOLID OUTLINES.
- SLIT THE LEG HOLES (*) WITH A SHARP BLADE AND EASE OPEN WITH A PENCIL TIP, CAREFUL NOT TO PUSH IT ALL THE WAY THROUGH.



THE PYXIS NINJA



↑ ↑ ↑

ROLL EACH LEG PIECE AROUND A PENCIL TO GET IT STARTED; THEN RE-ROLL TIGHTLY, GLUEING IT SHUT SO THAT IT'S SLIGHTLY NARROWER THAN THE PENCIL.

↑ ↑ ↑

ROLL EACH LEG PIECE AROUND A PENCIL TO GET IT STARTED; THEN RE-ROLL TIGHTLY, GLUEING IT SHUT SO THAT IT'S SLIGHTLY NARROWER THAN THE PENCIL.